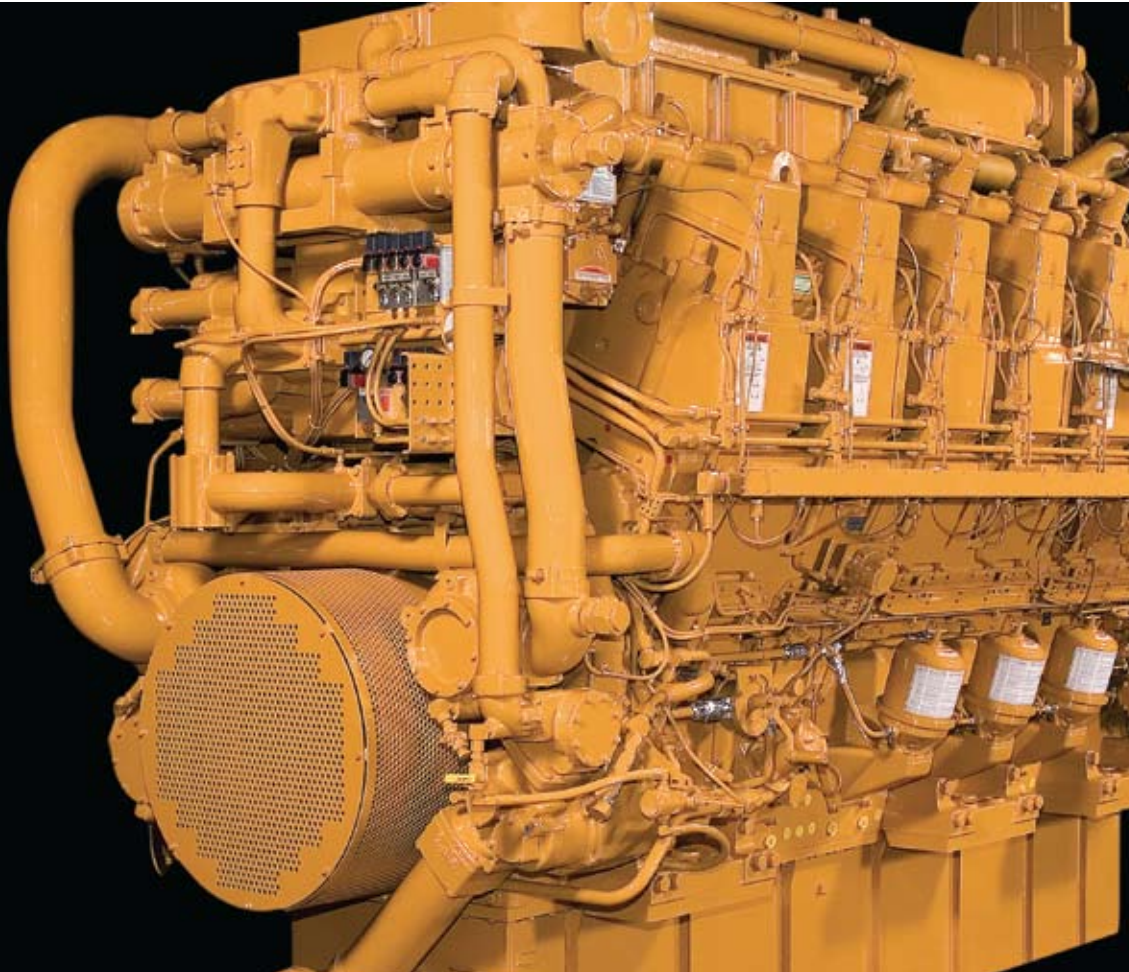


Cat[®] D3600 EUI Upgrade



Upgrade Provides Same Reliable Power

The Electronic Unit Injection (EUI) upgrade for Petroleum and Marine is a clear example of Caterpillar's ongoing commitment to lead the industry in customer satisfaction and value. Electronic unit injection is employed for dramatic reductions in transient smoke, improved diagnostic capability and reduced maintenance. Some engines may also experience minor improved fuel consumption based on the actual operating conditions.

The EUI fuel system combines the Cat[®] ADEM™-III governor with electronic unit injectors for precise fuel injection. This system uses variable injection timing and duration to optimize combustion at any speed and load. Your Cat dealer has all the information and equipment you need to take advantage of Caterpillar's advanced engine technology.

CATERPILLAR[®]

Electronic Improvements Optimize Combustion

The ADEM-III regulates each injector solenoid to precisely control the timing and length of fuel injection, eliminating any need for mechanical synchronization of the injectors. The ADEM-III monitors the turbocharger boost pressure and the throttle speed, and then dispenses the exact amount of fuel for optimum combustion.

The 3600 EUI Upgrade engine also:

- Virtually eliminates transient smoke
- Reduces steady state smoke
- Reduces noise and vibration
- Reduces required maintenance time

Note: D3618 and D3600 HFO engines currently are not considered for this upgrade.

For more information, contact your Dealer.

Electronic Controls Improve Performance

Electronic Features/Benefits

- Load feedback
- Programmable droop
- Adjustable gain
- Adjustable fuel/air ratio control
- Histograms of engine operation by Cat Electronic Technician
- Cat Messenger display presents diagnostics and other engine parameters

EUI Features/Benefits

- Drop-in installation
- No threaded fuel connections
- High fuel pressure is inside the injector only
- No double wall fuel lines or leak collection device
- Injector synchronization not required

ADEM-III ECM Features/Benefits

- CAN J1939 data link
- Waterproof connectors
- Maintenance free
- Backup ECM for redundant governing
- Improved diagnostic capability

CAT® DEALERS DEFINE WORLD-CLASS PRODUCT SUPPORT.

We offer you the right parts and service solutions, when and where you need them.

The Cat Dealer network of highly trained experts keeps your entire fleet up and running to maximize your equipment investment.

